



宏茂五金

HOMER

HARDWARE INC.

BUCKLE / EXTENSION / BELT RETRACTOR / AUTO PART
HOOK PART / LOCK STRIKER / LATCH / HINGE





目錄 CONTENTS

○ ABOUT US	01	○ HOOK PART 安全勾	30
○ EQUIPMENTS	03	Hook	30
○ BUCKLE 安全扣	05	Eye Swivel	30
Push Bottom Buckles 按壓釋放	05	Shackle	33
Flip Release Buckles 掀蓋釋放	15	Tie Down Part	33
Side Release Buckles 側邊釋放	18	Trailer Tie Loop	33
○ PRODUCTS EXTENSION 應用延伸	19	○ CAR LOCK STRIKER 車鎖	34
○ SEAT BELT RETRACTOR 兩點式/捲尺座	22	○ LATCH 扣件	36
○ AUTO PART 配件	27	○ HINGE 鉸鍊	39

- Stability
- Capability
- Coordination





公司簡介 ABOUT US

Engineering Reliable Hardware Solutions 精密五金製造的可靠合作夥伴

Company Overview 公司簡介

For over 30 years, HOMER Hardware Inc. has specialized in the manufacturing of precision metal hardware, automotive components, furniture hardware, and customized industrial parts. More than a supplier, HOMER acts as a manufacturing partner, helping customers transform ideas, concepts, and designs into reliable products. Guided by the principles of Quality Control, Integrity, and Continuous Innovation, we are committed to delivering dependable solutions and long-term value to customers worldwide.

宏茂五金深耕金屬與塑膠零件製造超過三十年，專精於汽車零件、家具五金及各類客製化工業零件的開發與生產。我們不只是製造商，更是客戶的製造合作夥伴，協助客戶將設計概念、產品構想與技術需求，轉化為穩定可靠的實際產品。秉持品質嚴控、誠信經營、持續創新的企業理念，我們致力於為全球客戶提供值得信賴的產品與長期價值。

From Concept to Production 從概念到量產

At HOMER, we work closely with customers from the earliest stages of product development. From design evaluation and material selection to structural optimization and manufacturability analysis, our team helps transform ideas into manufacturable and reliable products. Our goal is not only to produce parts, but to help customers solve problems and reduce development risks.

在產品開發初期，宏茂即與客戶緊密合作。從產品設計評估、材料選擇到結構優化與製造可行性分析，我們協助客戶將想法轉化為可量產且可靠的產品。我們的目標不僅是生產零件，更是協助客戶解決問題並降低產品開發風險。

Quality Inspection & Testing 品質檢測與測試

Our facility is equipped with a comprehensive range of inspection and testing equipment to support strict quality control. To ensure product reliability and consistency, 100% inspection is conducted before every shipment.

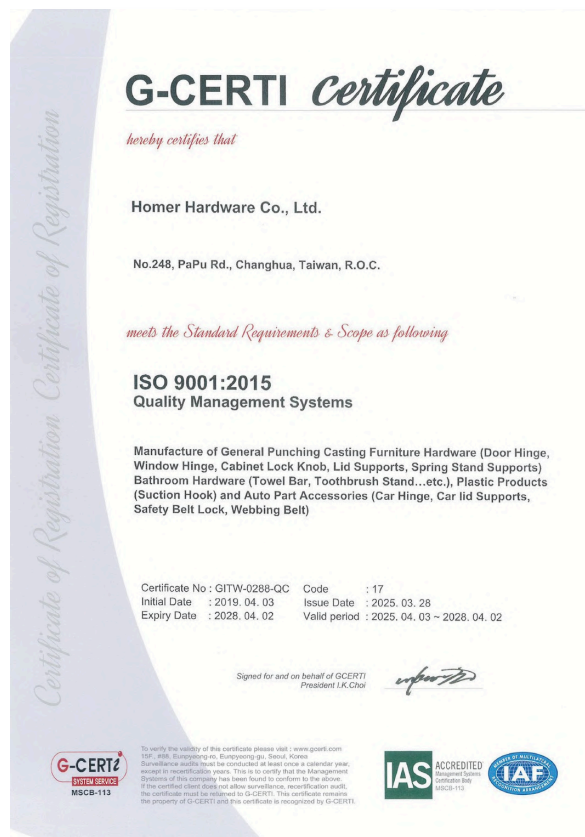
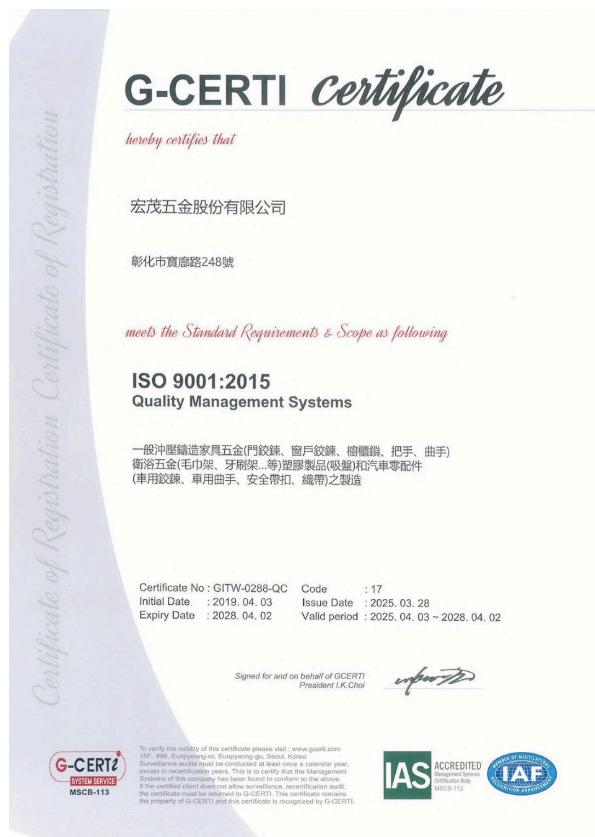
宏茂五金配備多項檢測與測試設備，以支援嚴格的品質管理。為確保產品的可靠性與一致性，所有產品於出貨前皆進行100%全檢。

Our Vision 未來展望

Under second-generation leadership, HOMER continues to integrate innovation with traditional manufacturing. Through automation and advanced production technologies, we aim to enhance efficiency, strengthen product reliability, and help our customers remain competitive in global markets.

在第二代的帶領下，宏茂持續將創新思維導入傳統製造。透過自動化設備與先進製程，我們持續提升效率與品質，協助客戶在全球市場中保持競爭優勢。

品質管理 QUALITY MANAGEMENT



通過 ISO 9001 : 2015 品質管理系統認證

以嚴謹品質管理與穩定製造能力，為客戶創造長期價值

ISO 9001 : 2015 Certified

Committed to Quality Management and Reliable Manufacturing Excellence

35+

Years Experience
 Found In 1991

IN-HOUSE LAB

In-House R&D and
 Validation Facility



OEM / ODM

Custom Design
 Support

QUALITY ASSURED

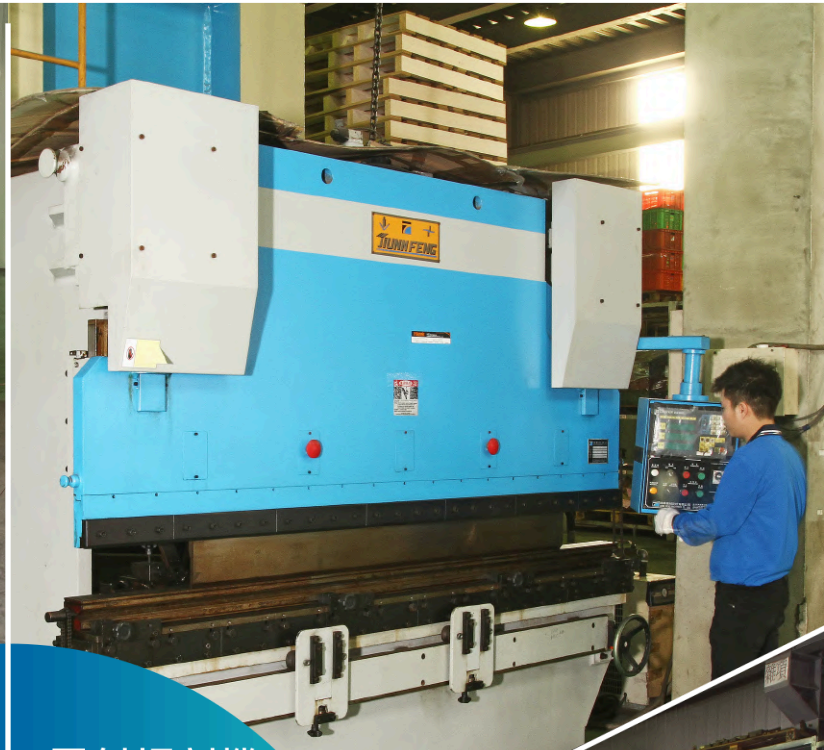
100% Inspection
 Before Shipment



機械設備 PRODUCTION EQUIPMENT



雷射雕刻機
LASER
ENGRAVER



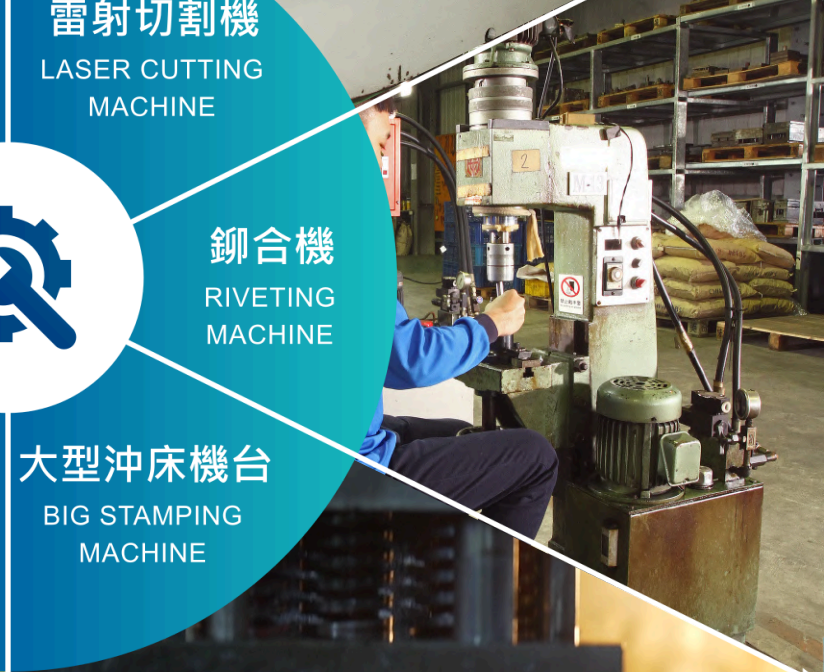
雷射切割機
LASER CUTTING
MACHINE



織帶機
SEWING
MACHINE



鉚合機
RIVETING
MACHINE



鑄造設備
DIE CASTING
MACHINE

大型沖床機台
BIG STAMPING
MACHINE

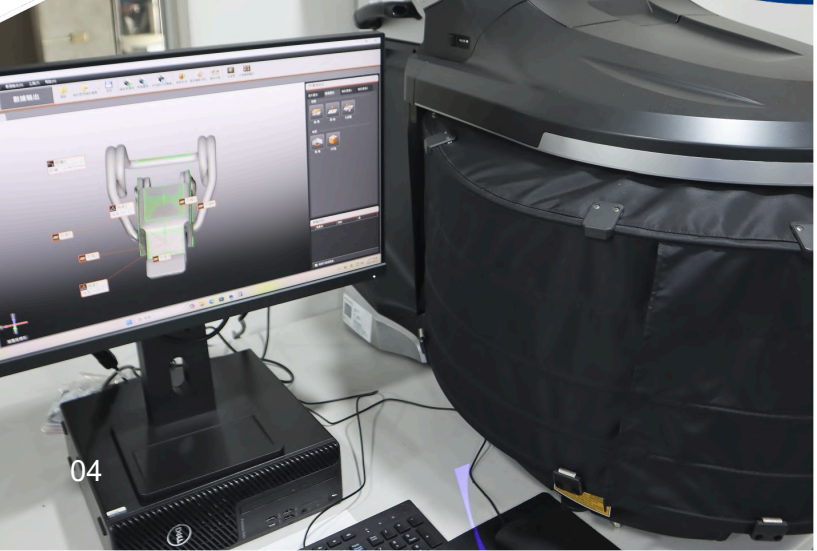




品檢設備 QC EQUIPMENT



Quality Control Test Room
品質檢測室





拉力測試機
Tensile Tester



鹽霧測試機
Salt Spray Tester



客製包裝
Custom Packaging



2.5D 投影機
2.5D Profile Projector



逐一全檢
100% Full Inspection



硬度測試機
Hardness Tester



BUCKLE

CA-01

BUCKLE

EXTENSION

BELT RETRACTOR

AUTO PART

HOOK PART

LOCK STRIKER

LATCH

HINGE



CA-0100E

Webbing hole
23.5mm

Size
64.5mm×48.2mm

防誤壓



CA-0120E

Webbing hole
23.5mm

Size
64.5mm×48.2mm

Function
Prevent accidental presses

防誤壓



CA-0150E

Webbing hole
23.5mm

Size
64.5mm×48.2mm

Function
Prevent accidental presses

2孔



CA-0110E

Webbing hole
23.5mm

Size
64.5mm×48.2mm

Function
Two hole



CA-0110EA

Belt slot
50.5mm

Size
65.6mm×48.2mm

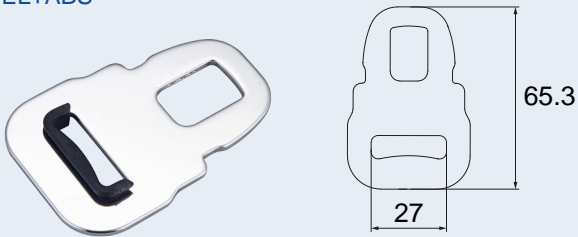


CA-0110EB

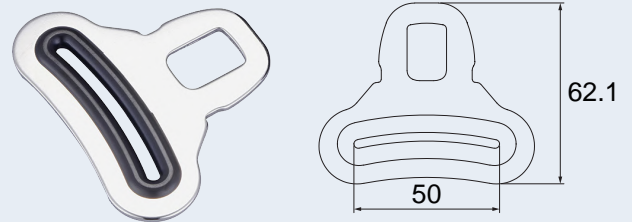
Hole size
10mm

Size
94.5mm×48.2mm

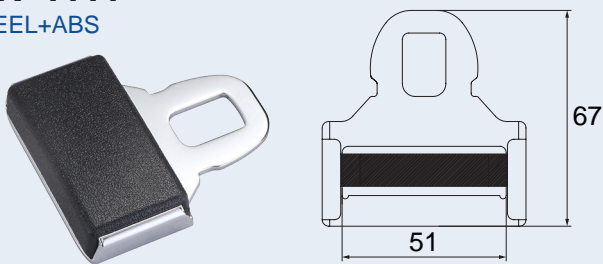
CW-1001A
STEEL+ABS



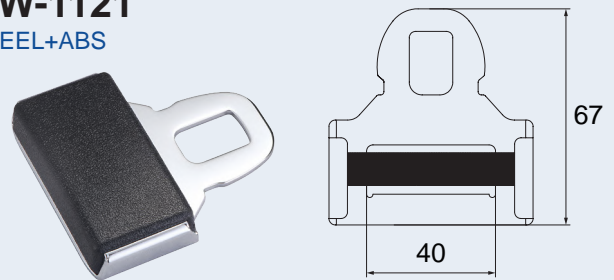
CW-1005
STEEL+ABS



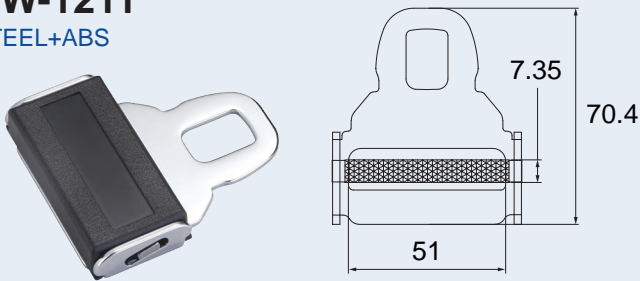
CW-1111
STEEL+ABS



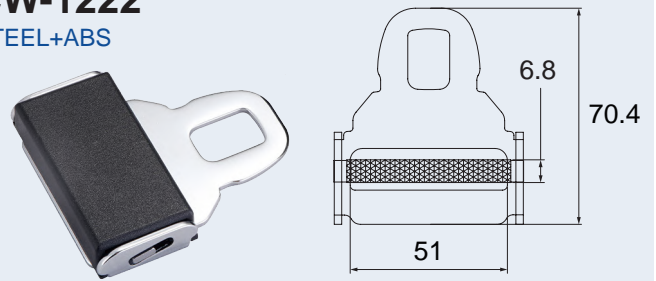
CW-1121
STEEL+ABS



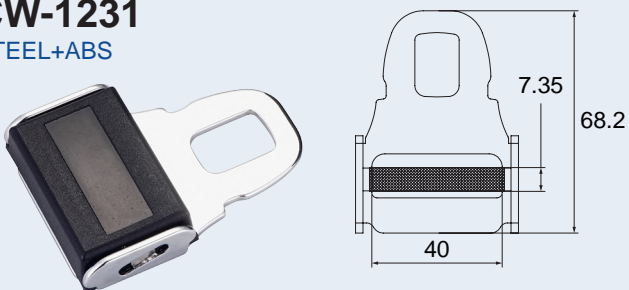
CW-1211
STEEL+ABS



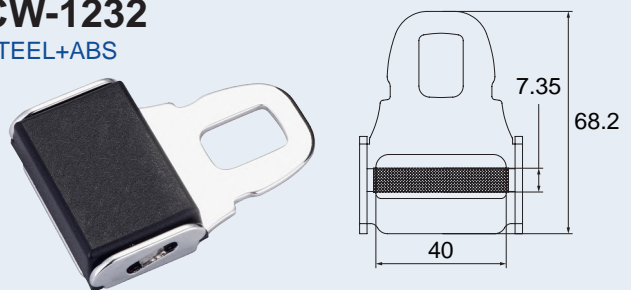
CW-1222
STEEL+ABS



CW-1231
STEEL+ABS



CW-1232
STEEL+ABS



BUCKLE

CA-02

BUCKLE

EXTENSION

BELT RETRACTOR

AUTO PART

HOOK PART

LOCK STRIKER

LATCH

HINGE



CA-0200E

Webbing hole
Ø26.9mm

Size
100mmx51mm



CA-0211E

Webbing hole
Ø13mm

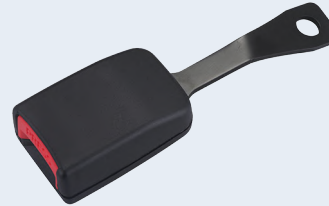
Size
365mmx51mm



CA-0221E

Webbing hole
Ø15.5mm

Size
177mmx51mm



CA-0230E

Webbing hole
Ø13mm

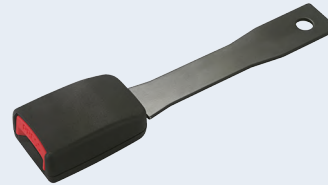
Size
167mmx51mm



CA-0231EA

Webbing hole
Ø13mm

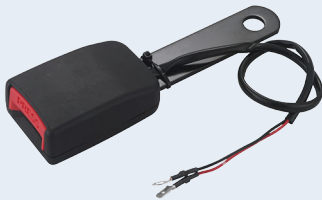
Size
170mmx51mm



CA-0240E

Webbing hole
Ø12mm

Size
240mmx51mm



CA-0251E

Webbing hole
Ø12mm

Size
170mmx51mm

延伸且消音



CA-0260E

Webbing hole
36mmx21.6mm

Size
121mmx51mm

Function
Extended fasteners and silence

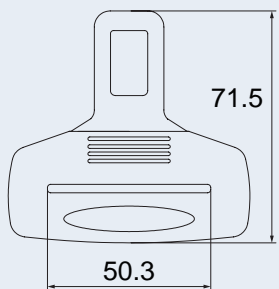


CA-0270E

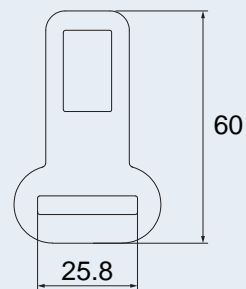
Webbing hole
Ø12mm

Size
135mmx51mm

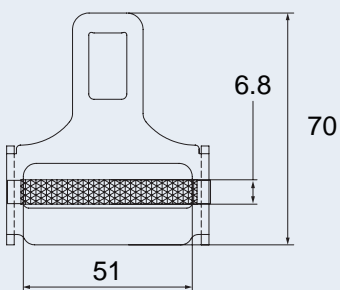
CW-2001
Steel+ABS

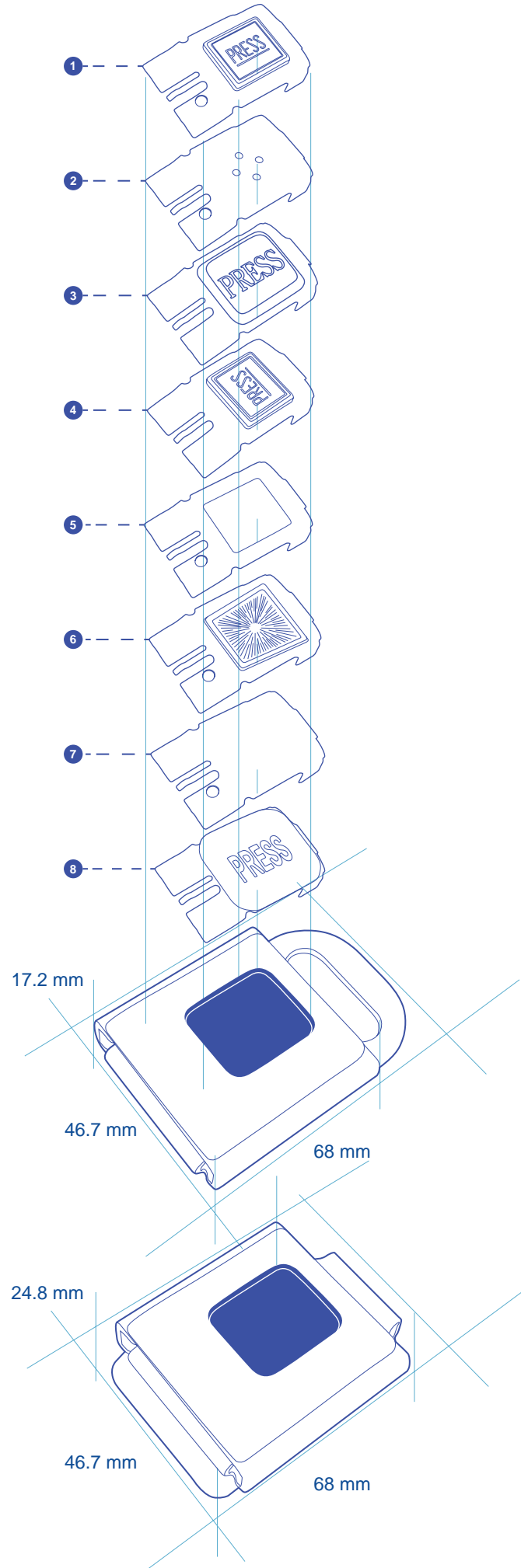
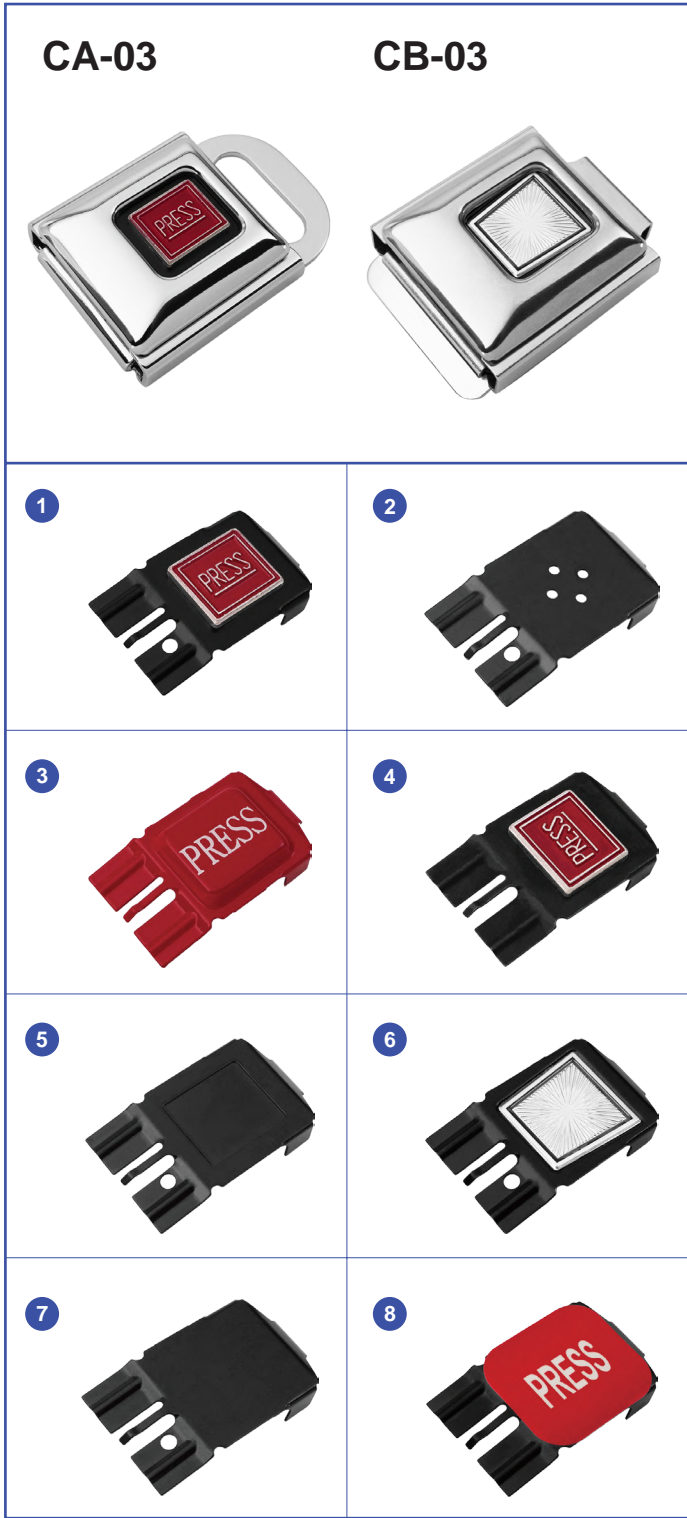


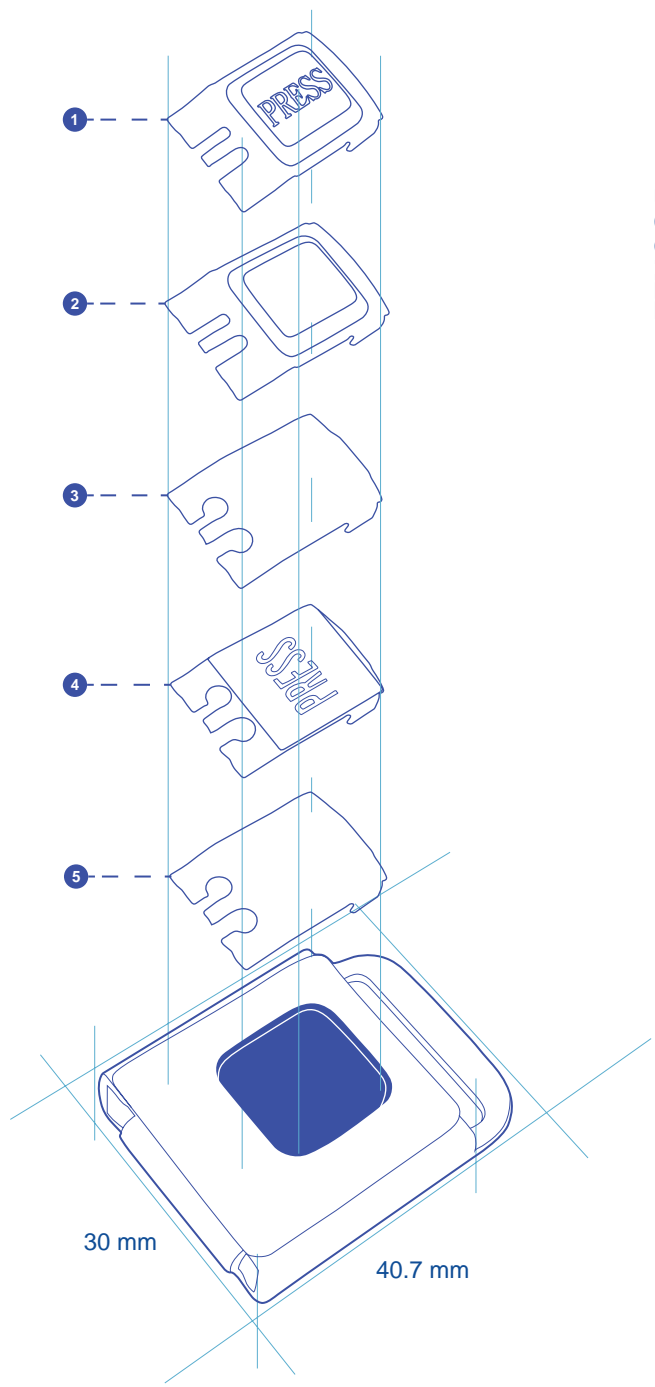
CW-2002
Steel



CW-2122
STEEL+ABS







BUCKLE

CA-03

BUCKLE

EXTENSION

BELT RETRACTOR

AUTO PART

HOOK PART

LOCK STRIKER

LATCH

HINGE



CA-0300A

Webbing hole
30mm

Size
68mm×46.7mm



CA-0301C

Webbing hole
30mm

Size
68mm×46.7mm



CA-0303A

Webbing hole
30mm

Size
68mm×46.7mm



CA-0306AA

Webbing hole
30mm

Size
68mm×46.7mm

防誤壓



CA-0310A

Webbing hole
30mm

Size
68mm×46.7mm

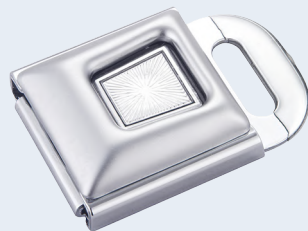
Function
Prevent accidental presses



CA-0356A

Webbing hole
21mm

Size
68mm×46.7mm



CA-0360BP

Webbing hole
25mm

Size
68mm×46.7mm



CB-0350D

Belt slot
38mm

Size
68mm×46.7mm



CA-03951A

Webbing hole
23mm

Size
68mm×46.7mm

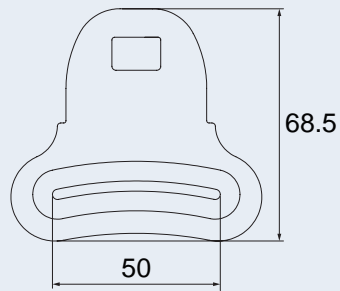


CA-0303TCA

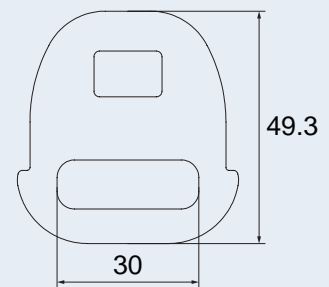
Webbing hole
50mm

Size
75mm×46.7mm

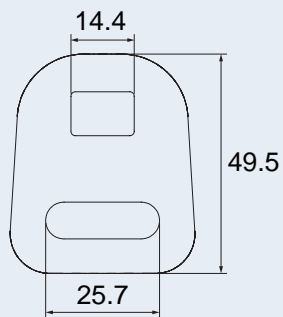
CW-3001
STEEL+ABS



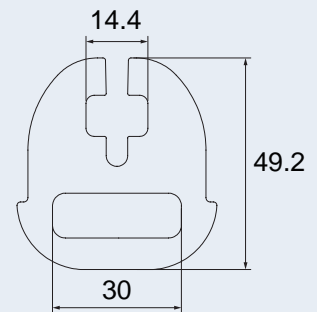
CW-3002
STEEL



CW-3003
STEEL



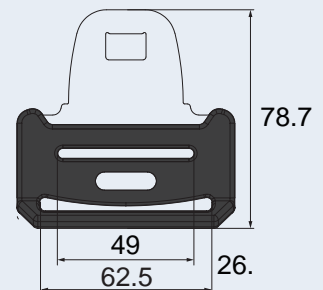
CW-3004
STEEL



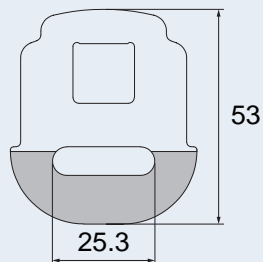
CW-3005A
STEEL+ABS



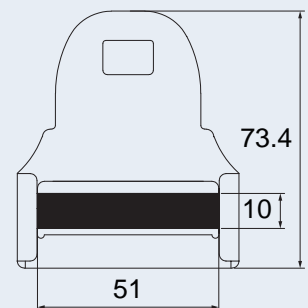
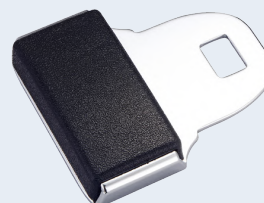
CW-3007
STEEL+ABS



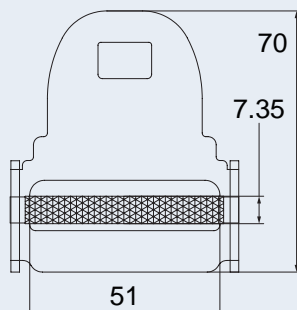
CW-3008
STEEL+PU



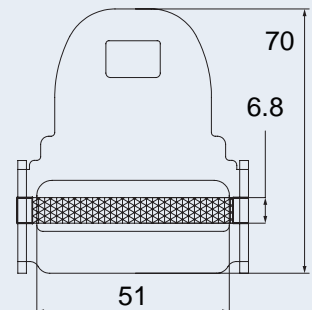
CW-3111
STEEL+ABS



CW-3211
STEEL+ABS



CW-3222
STEEL+ABS



BUCKLE

CA-05
CB-05

CB-0501A



Webbing hole
25mm

Size
55mmx38mm

CB-0501A1



Webbing hole
25mm

Size
55mmx38mm

CB-0500B

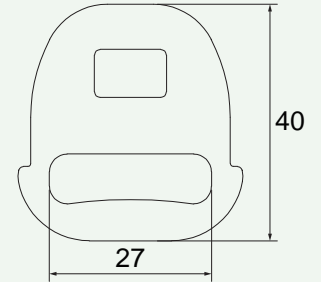


Webbing hole
25mm

Size
55mmx38mm

CX-5002

STEEL



CA-0500A



Webbing hole
23.8mm

Size
40.7mmx30mm

CA-0502A



Webbing hole
23.8mm

Size
40.7mmx30mm

CA-0503C



Webbing hole
23.8mm

Size
40.7mmx30mm

防誤壓



CA-0510A

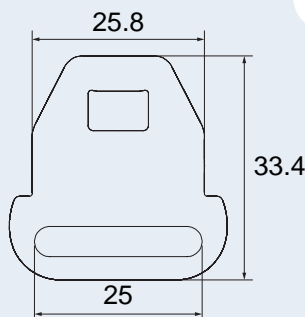
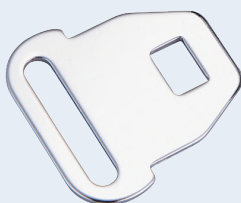
Webbing hole
23.8mm

Size
40.7mmx30mm

Function
Prevent accidental presses

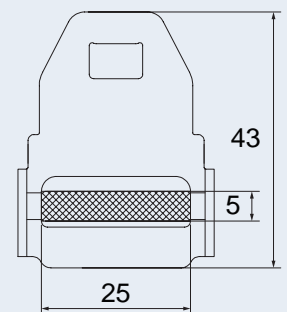
CW-5002

STEEL



CW-5111

STEEL+ABS



BUCKLE

EXTENSION

BELT RETRACTOR

AUTO PART

HOOK PART

LOCK STRIKER

LATCH

HINGE

Size Comparison

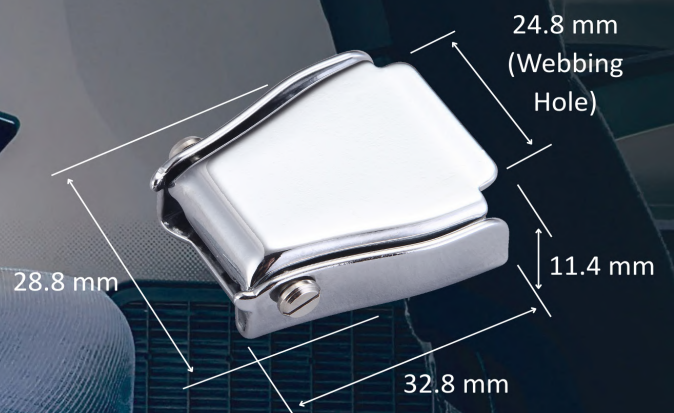
CA-04 Regular



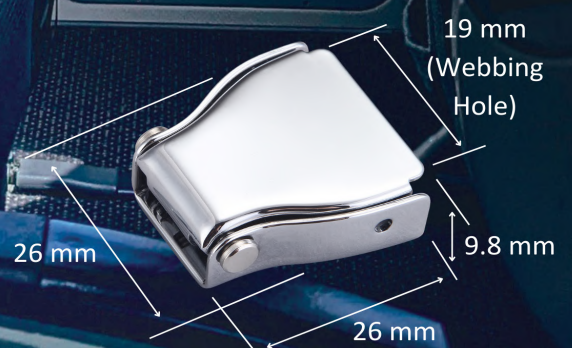
CB-04 M



CB-02 S



CB-01 XS



BUCKLE

CA-04
CB-04

BUCKLE
EXTENSION
BELT RETRACTOR
AUTO PART
HOOK PART
LOCK STRIKER
LATCH
HINGE

脫離角度可調整

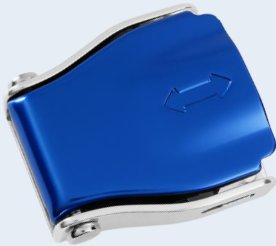


CA-0410G1

Webbing hole
50.4mm

Size
65mmx58mm

Function
Releasing angle



CA-0410GA3

Webbing hole
50.4mm

Size
65mmx58mm

Function
Releasing angle



CA-0410GA4

Webbing hole
50.4mm

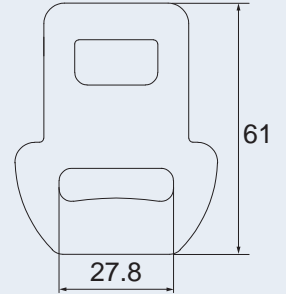
Size
65mmx58mm

Function
Releasing angle



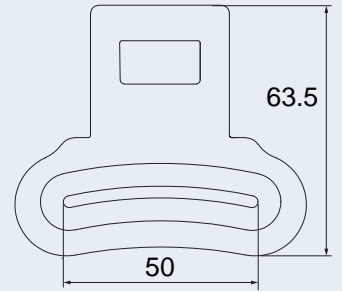
CW-4001

STEEL



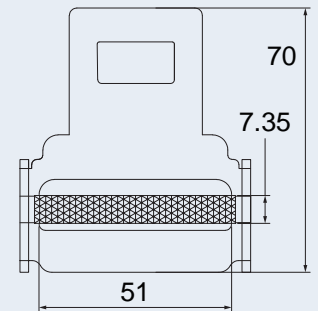
CW-4002

STEEL+ABS



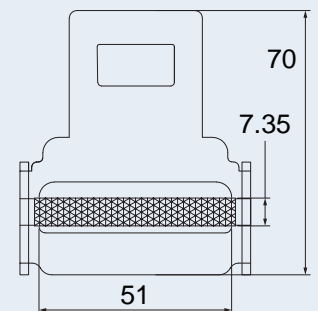
CW-4511

STEEL+ABS



CW-4512

STEEL+ABS

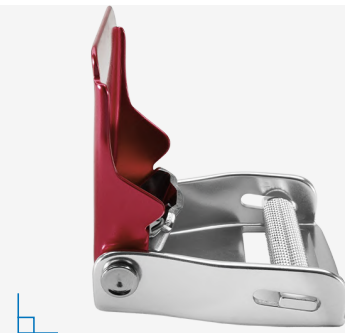


BUCKLE RELEASE ANGLE

CA-0410G3
CA-0410G4



45 Degree



90 Degree

BUCKLE

CB-02
CB-04

BUCKLE

EXTENSION

BELT RETRACTOR

AUTO PART

HOOK PART

LOCK STRIKER

LATCH

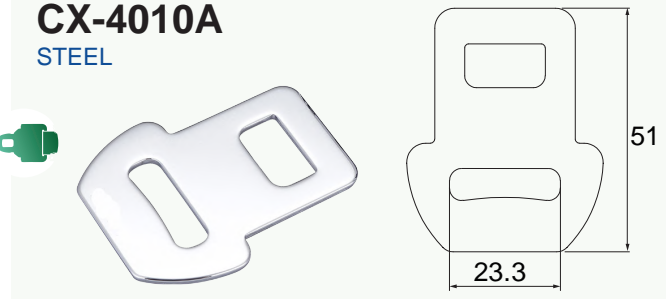
HINGE



CB-0410A

Webbing hole
42.5mm

Size
55.5mm×49.5mm



CX-4010A
STEEL

51

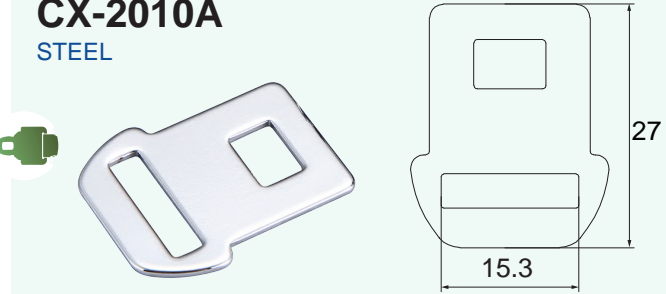
23.3



CB-0210A

Webbing hole
24.8mm

Size
33mm×28.9mm



CX-2010A
STEEL

27

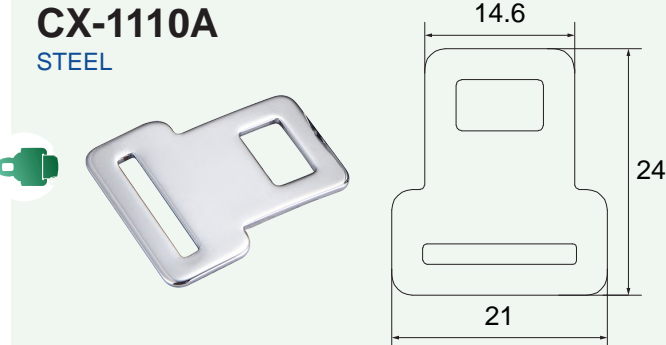
15.3



CB-0110A

Webbing hole
19mm

Size
26.1mm×26mm



CX-1110A
STEEL

14.6

24

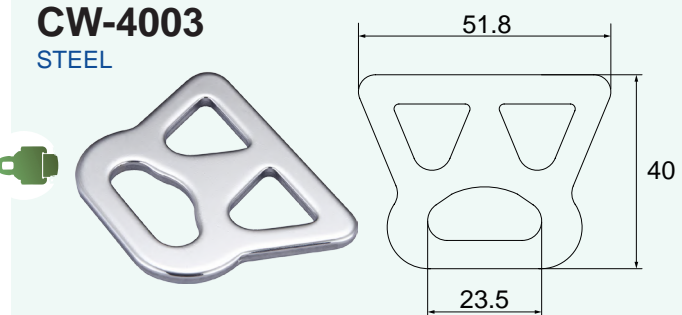
21



CA-1410A2

Webbing hole
52mm

Size
54mm×60mm



CW-4003
STEEL

51.8

40

23.5

BUCKLE

CA-06

BUCKLE

EXTENSION

BELT RETRACTOR

AUTO PART

HOOK PART

LOCK STRIKER

LATCH

HINGE



CA-0600A

Webbing hole
52mm
Size
60mmx62mm



CA-0600B

Webbing hole
52mm
Size
60mmx62mm

2孔

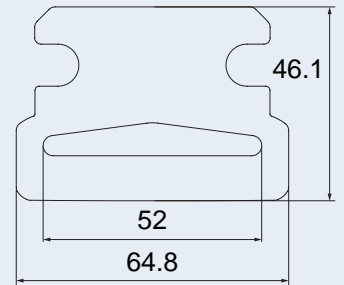
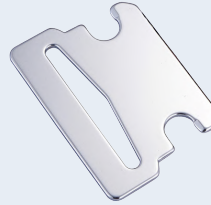


CA-0620A

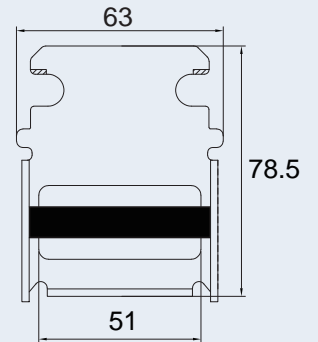
Webbing hole
52mm
Size
60mmx62mm
Function
Two hole



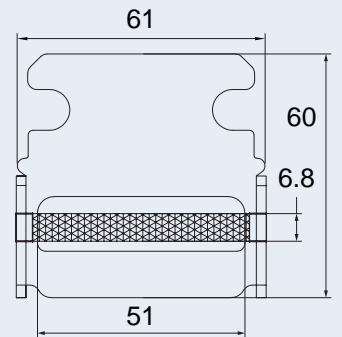
CW-6001
STEEL



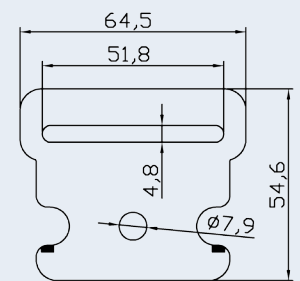
CW-6111
STEEL+ABS



CW-6221
STEEL+ABS



CW-6002
STEEL



COMPARISON

CA-0600A Regular



CA-0900A L



BUCKLE

CA-07
CA-08

BUCKLE

EXTENSION

BELT RETRACTOR

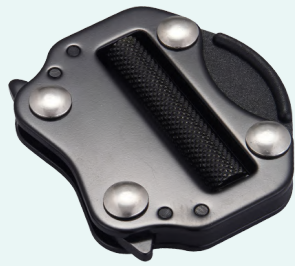
AUTO PART

HOOK PART

LOCK STRIKER

LATCH

HINGE



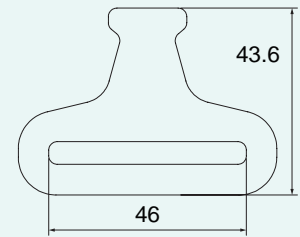
CA-0700A

Webbing hole
46mm

Size
54.5mm×60mm

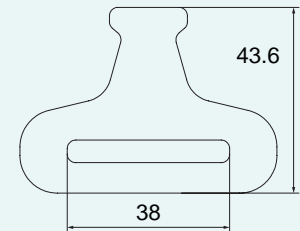
CW-7001

STEEL



CW-7002

STEEL



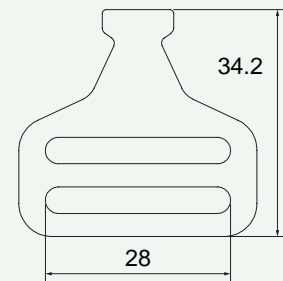
CA-0800A

Webbing hole
20mm

Size
36mm×40mm

CW-8001C

STEEL



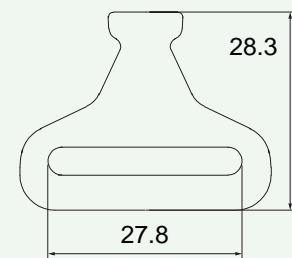
CA-0810C

Webbing hole
26mm

Size
36mm×40mm

CA-8002C

STEEL



COMPARISON

CA-0700A

Regular



CA-0810C

S



**PRODUCTS
EXTENSION**

應用延伸

BUCKLE

C0001E



HO-FED035



EXTENSION

BELT RETRACTOR

HO-TER2349



CA-1502A

Waist buckle



AUTO PART

ID Badge-301



Keychain-201



HOOK PART

Keychain-301



Keychain-501



LOCK STRIKER

LATCH

Keychain-502



Keychain-801



HINGE

Tool Bag-01



Tool Bag-02



Tool Bag-03



Tool Bag-04



BUCKLE

EXTENSION

BELT RETRACTOR

AUTO PART

HOOK PART

LOCK STRIKER

LATCH

HINGE

PRODUCTS EXTENSION

應用延伸

BUCKLE

EXTENSION

Pet Collar



Seatbelt Carabiner



BELT RETRACTOR

Pet Harness



Pet Leash



AUTO PART

Belt-S01



HOOK PART

Belt-07



LOCK STRIKER

Belt-01



LATCH

HINGE

**SEAT BELT
RETRACTOR**

CD-0306A-A01

Female (Buckle) 24.4"
Male (Tongue) 47"



CD-0410G1-A01

Female (Buckle) 47"
Male (Tongue) 24.4"



CD-0600A-A01

Female (Buckle) 24.4"
Male (Tongue) 47"



CD-0700A-A01

Female (Buckle) 24.4"
Male (Tongue) 47"



CP-200AB-082JB

Extended 32.3"



CP-201AA-075JA

Extended 29.5"



C0100E-Q501EA-15

Female (Buckle) 6"
Male (Tongue) 33"



C0100E-Q601EA-15

Female (Buckle) 6"
Male (Tongue) 42"



CR-501E-2001

Extended 24.4"
Retracted 12.2"



HO-FEC-028A

Extended 60"
Retracted 60"



BUCKLE

EXTENSION

BELT RETRACTOR

AUTO PART

HOOK PART

LOCK STRIKER

LATCH

HINGE

SEAT BELT RETRACTOR

BUCKLE

EXTENSION

BELT RETRACTOR

AUTO PART

HOOK PART

LOCK STRIKER

LATCH

HINGE

HO-FEC056

Female (Buckle) 4.7"
Male (Tongue) 48.5"



HO-FES016

Total Length 47"



HO-FEC017

Female (Buckle) 11"
Male (Tongue) 35"



HO-FEB029

Extended 120"
Retracted 96"



HO-FEB005K3

Extended 120"
Retracted 78"



HO-FEC041

Extended 40"
Retracted 40"
Female (Buckle) 6.5"



HO-FEB003C

Extended 120"
Retracted 96"



HO-FEB028

Extended 120"
Retracted 86"



HO-FEB016

Extended 105"
Retracted 98"
Female (Buckle) 6.5"



HO-FEP041

Extended 120"
Retracted 86"



HO-CEF013

Extended 35.4"



HO-CEF014

Extended 46.8"

Retracted 45.3"



HO-CEF015

Extended 45.3"

Retracted 45.3"



HO-CEF027

Extended 40.6"

Retracted 40.6"



HO-CEF029

Extended 43.3"

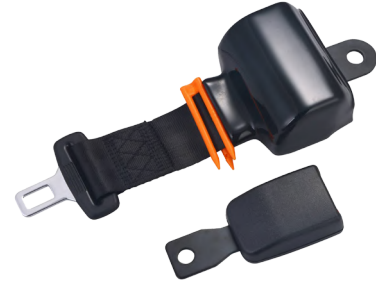
Retracted 43.3"



HO-CEF030

Extended 39.4"

Retracted 39.4"



HO-CEF033

Extended 126"

Retracted 126"



HO-CEF034

Extended 71.6"

Retracted 71.6"



HO-CEF035

Extended 72"

Retracted 72"



HO-CEF036

Extended 45.3"

Retracted 43.3"



BUCKLE

EXTENSION

BELT RETRACTOR

AUTO PART

HOOK PART

LOCK STRIKER

LATCH

HINGE

SEAT BELT RETRACTOR

BUCKLE

EXTENSION

BELT RETRACTOR

AUTO PART

HOOK PART

LOCK STRIKER

LATCH

HINGE

HO-CEF038

Extended 42.1"
Retracted 42.1"



HO-CEF039

Extended 49.2"
Retracted 49.2"



HO-CEF040

Extended 45.3"
Retracted 42.5"



HO-CEF042

Extended 44"
Retracted 44"



HO-CEF045

Extended 42.5"
Retracted 42.5"



HO-CEF046

Extended 63"
Retracted 60.6"



HO-CEF047

Extended 71.7"
Retracted 71.7"



HO-CEF050

Extended 72"
Retracted 72"



HO-SEF020-001

Extended 95.5"
Retracted 93"



HO-SEF022

Extended 26.4"
Retracted 26.4"



HO-FEC056



HO-FES016



HO-FEC017



HO-FEB029



HO-FEB005K3



HO-FEC041



HO-FEB003C



HO-FEB028



HO-FEB016



HO-FEP041



BUCKLE

EXTENSION

BELT RETRACTOR

AUTO PART

HOOK PART

LOCK STRIKER

LATCH

HINGE

BUCKLE

EXTENSION

BELT RETRACTOR

AUTO PART

HOOK PART

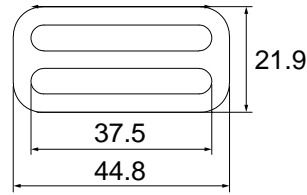
LOCK STRIKER

LATCH

HINGE

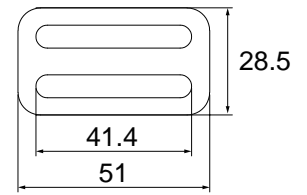
CY-003A

T : 2.8mm
STEEL



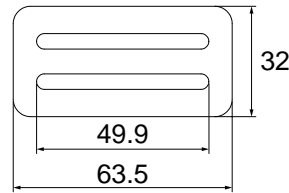
CY-004A

T : 3.2mm
STEEL



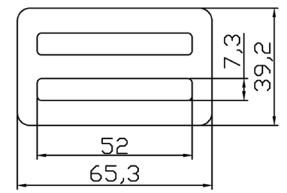
CY-005A

T : 3.5mm
STEEL



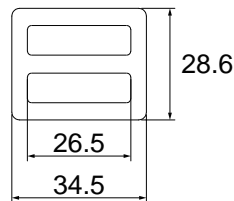
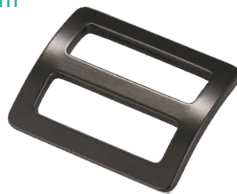
CY-062A

T : 3mm
STEEL



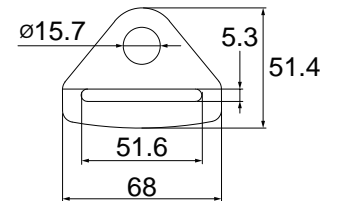
CY-007A

T : 2.5mm
STEEL



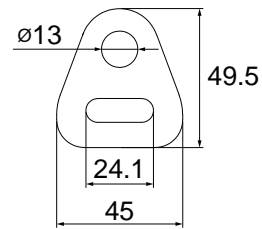
CY-008AA/BA

Hole : 12.7mm&15.7mm
T : 4mm
STEEL



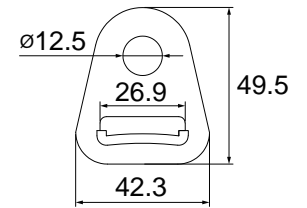
CY-011B

T : 4mm
STEEL



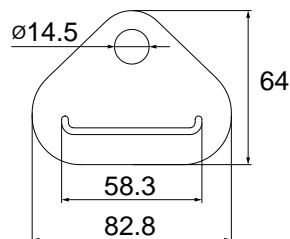
CY-015ABA

T : 3mm
STEEL



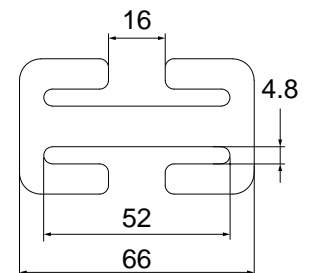
CY-016A

STEEL+PA6



CY-017A

T : 3mm
STEEL



BUCKLE

EXTENSION

BELT RETRACTOR

AUTO PART

HOOK PART

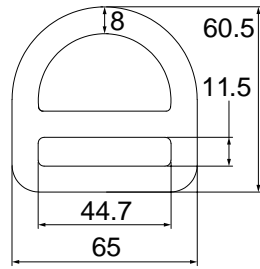
LOCK STRIKER

LATCH

HINGE

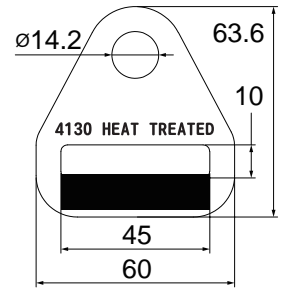
CY-022A

T : 5mm
STEEL



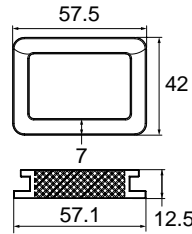
CY-039A

T : 5mm
STEEL



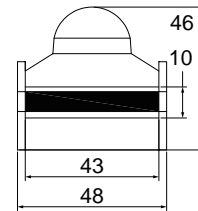
CY-041A

T : 4.4mm
Zinc Alloy



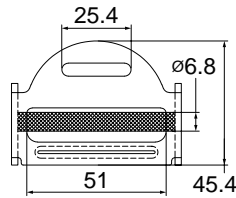
CY-044AA

T : 2.5mm
STEEL+ABS



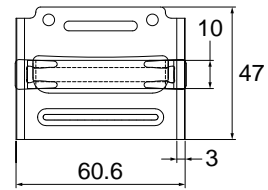
CY-045A

T : 2.3mm
STEEL+ABS



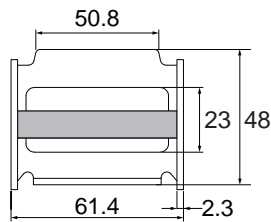
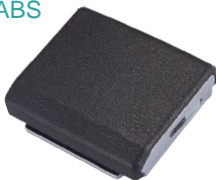
CY-046A

T : 3mm
ALUMINUM



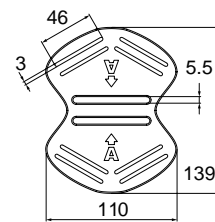
CY-048BA

T : 2.3mm
STEEL+ABS



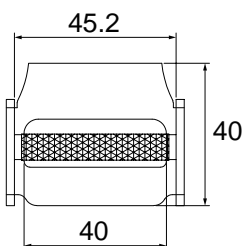
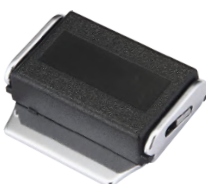
CY-049A

T : 4.5mm
PE



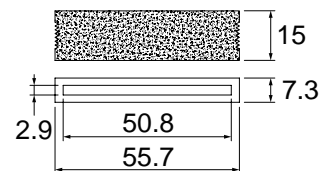
CY-050A 粗

T : 2.3mm
STEEL



CY-054A

T : 2.2mm
PE



BUCKLE

EXTENSION

BELT RETRACTOR

AUTO PART

HOOK PART

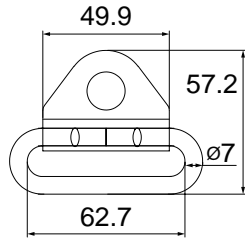
LOCK STRIKER

LATCH

HINGE

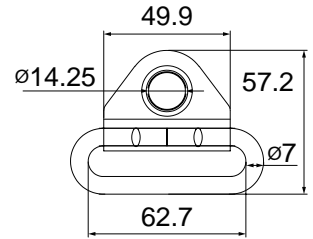
CY-901AC

Hole : 16.3mm&15.2mm
STEEL+ABS



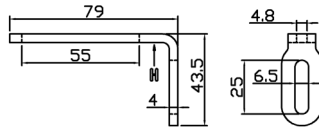
CY-901AB

Hole : 14.25mm
STEEL



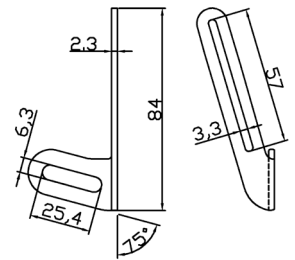
J243B

STEEL



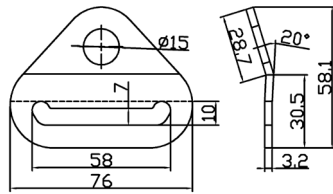
CY-061L/R

STEEL



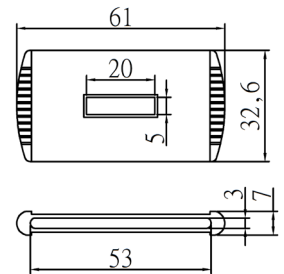
CY-065A

STEEL



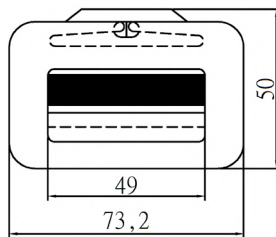
CY-066A

STEEL



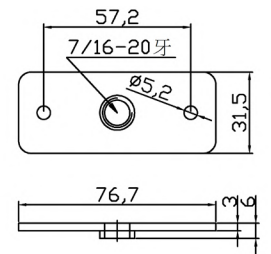
CY-068A

STEEL



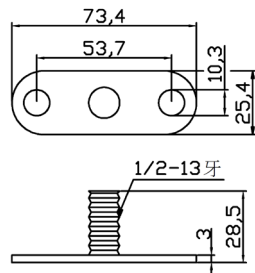
CY-910A-03

STEEL



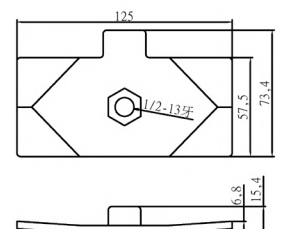
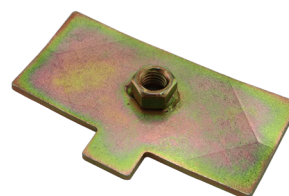
CY-910A-04

STEEL



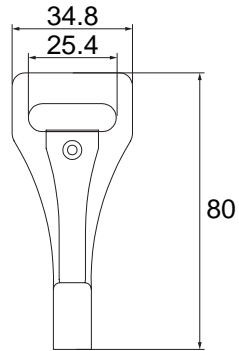
CY-910D-02

STEEL



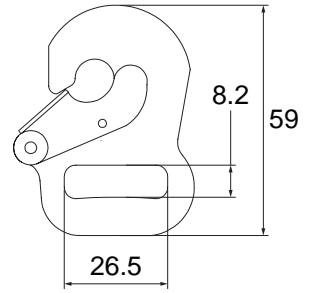
TC-010AA

T : 4.2mm
STEEL



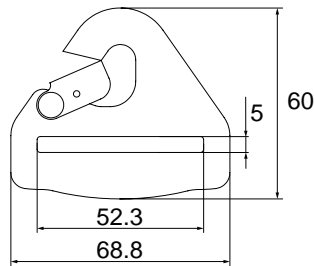
TC-020AA

T : 2.35mm
STEEL



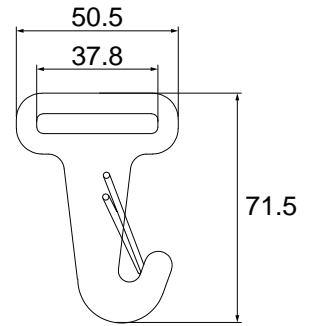
TC-030AA

T : 4mm
STEEL



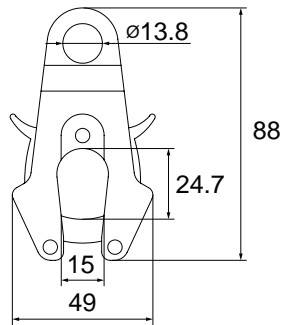
TC-050A

T : 4.2mm
STEEL



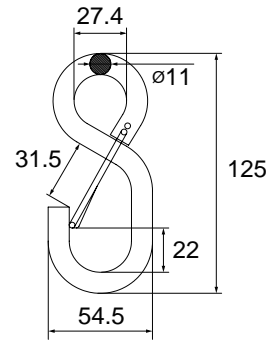
HO-TB-005

88mm*48mm
STEEL



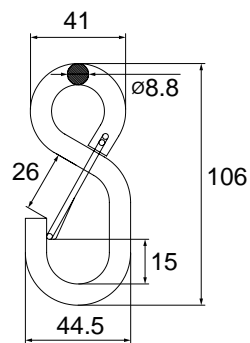
HO-TB-006

ø11mm
STEEL



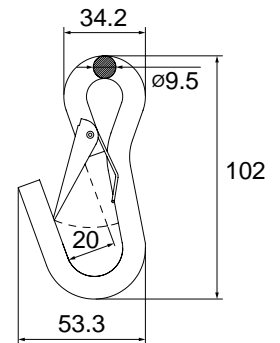
HO-TB-007

ø8.8mm
STEEL



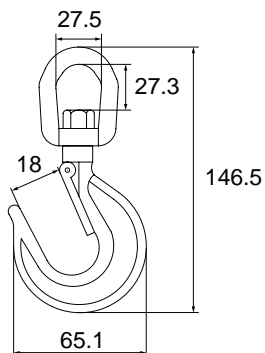
HO-TB-008

ø9.5mm
STEEL



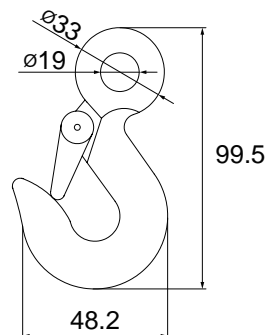
HO-S2511

146.5mm*65.1mm
SS304



HO-S2311

99.5mm*48.2mm
SS304



HOOK

安全钩

BUCKLE

EXTENSION

BELT RETRACTOR

AUTO PART

HOOK PART

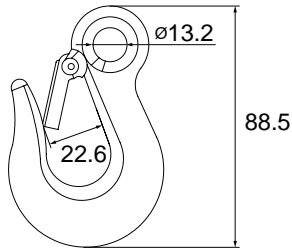
LOCK STRIKER

LATCH

HINGE

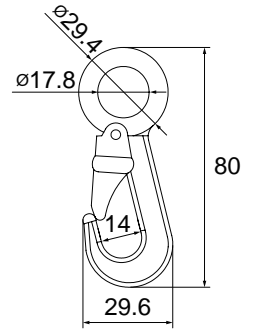
HO-S325X

L : 88.5mm
SS316



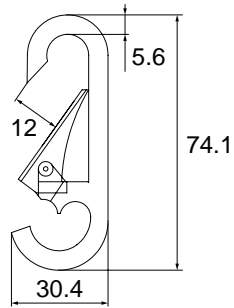
HO-S3387

80mm*29.6mm
SS304



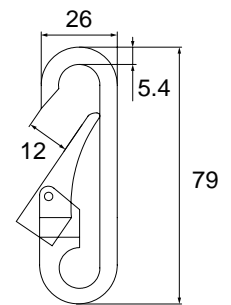
HO-S247H

74.1mm*30.4mm
SS304



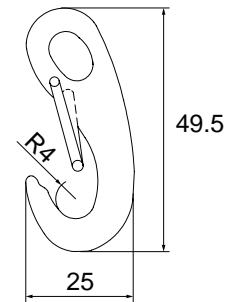
HO-S247A

79mm*26mm
SS304



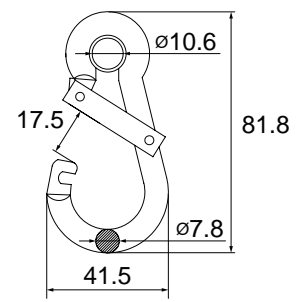
HO-S2470

49.5mm*25mm
SS304



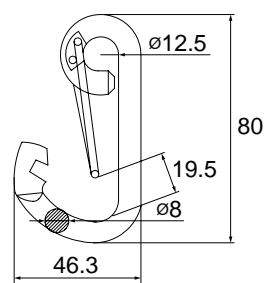
HO-S24505X

7.8mm
SS316



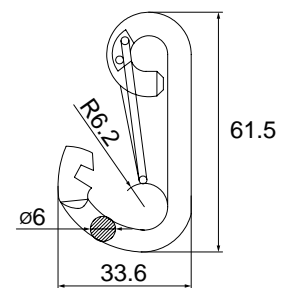
HO-TB004

8mm
SS304



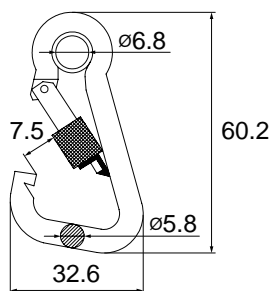
HO-S2430

6mm
SS304



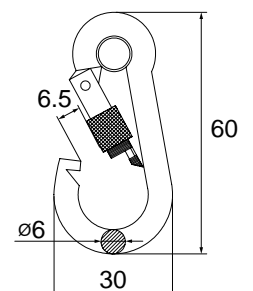
HO-S24502NX

5.8mm
SS304



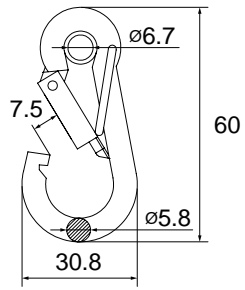
HO-S2450NX

6mm
SS304



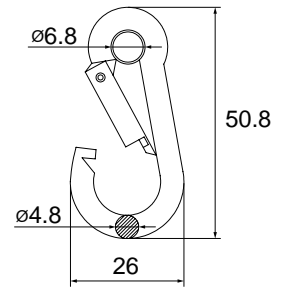
HO-S24501X

ø5.8mm
SS304



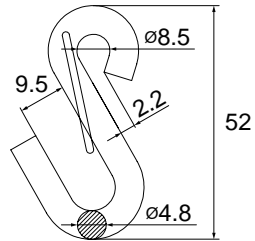
HO-S2450X

ø4.8mm
SS304



HO-S8751

ø4.8mm
SS316



BUCKLE

EXTENSION

BELT RETRACTOR

AUTO PART

HOOK PART

LOCK STRIKER

LATCH

HINGE

HOOK

安全钩

BUCKLE

EXTENSION

BELT RETRACTOR

AUTO PART

HOOK PART

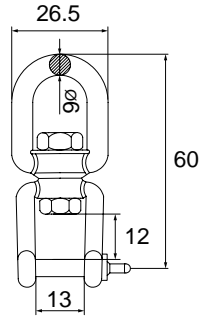
LOCK STRIKER

LATCH

HINGE

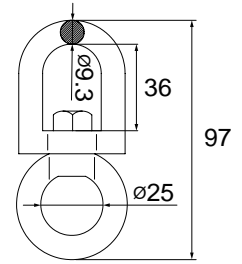
HO-S0181

ø6mm
SS304



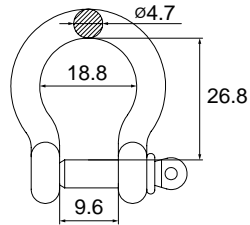
HO-S0180

ø9.3mm
SS316



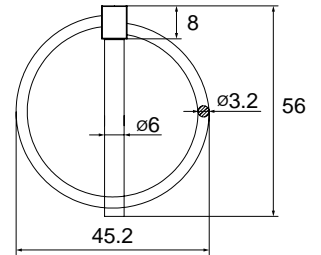
HO-S370F

ø4.7mm
SS304



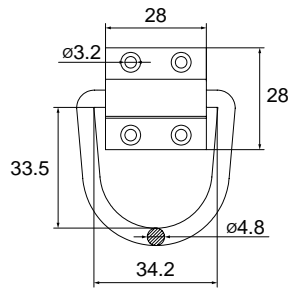
HO-S3193

56mm*45.2mm
SS316



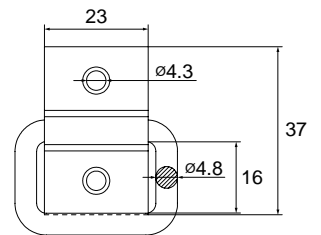
HO-S3217

ø4.8mm
SS304



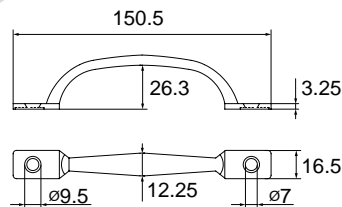
HO-S3218-0003

SS304



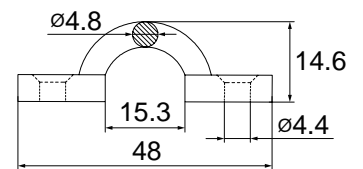
HO-S3110

SS304

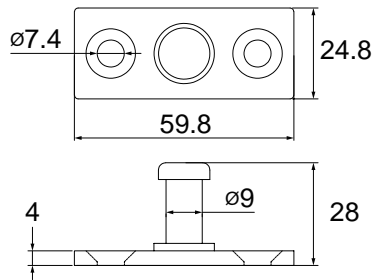


HO-S322H-0050

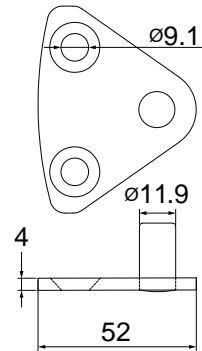
SS304



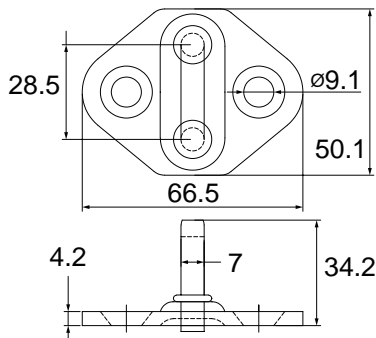
YB-001AA
STEEL



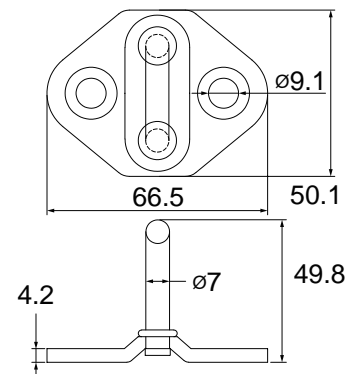
YB-002A
STEEL



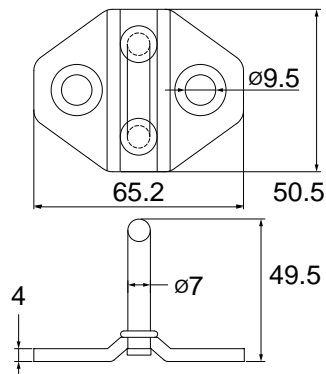
YC-010B
STEEL



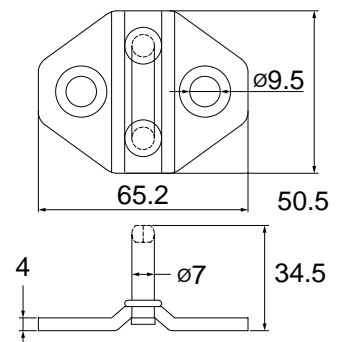
YC-011A
STEEL



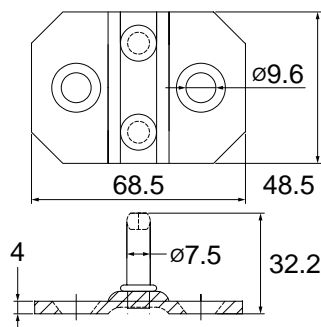
YC-013A
STEEL



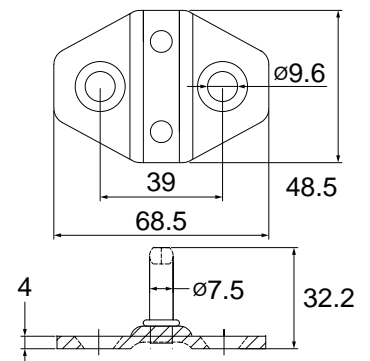
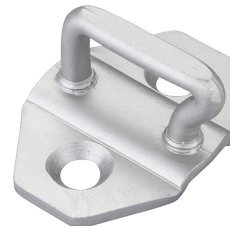
YC-012B
STEEL



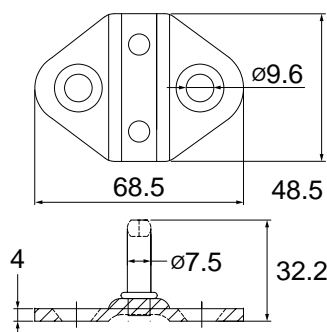
YC-021AB
STEEL



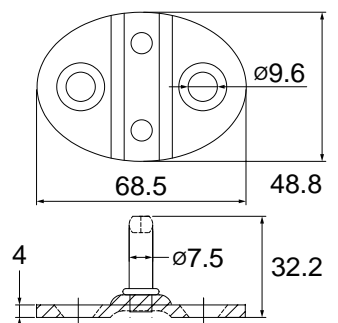
YC-022AB
STEEL



YC-023AB
STEEL



YC-024AB
STEEL



LOCK STRIKER

車鎖

BUCKLE

YA-001 L/R
STEEL



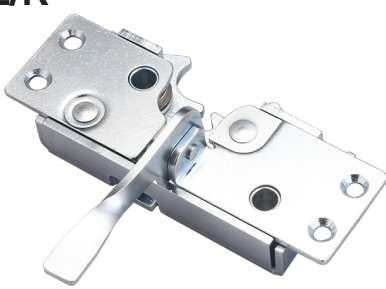
EXTENSION

YA-002 L/R
STEEL



BELT RETRACTOR

YA-003 L/R
STEEL



AUTO PART

YA-004 L/R
STEEL



HOOK PART

YA-005
STEEL



YA-006
STEEL

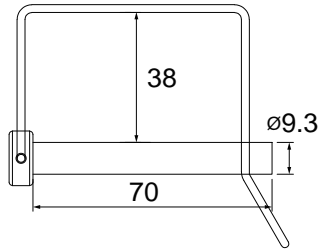
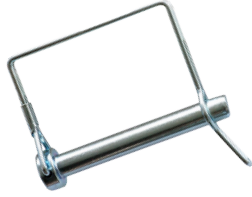


LOCK STRIKER

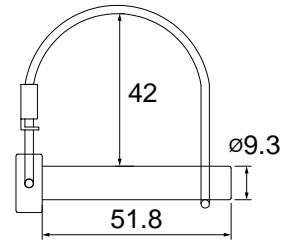
LATCH

HINGE

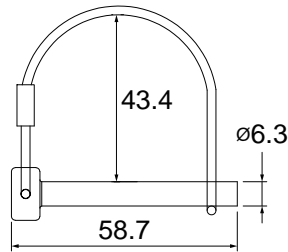
TA-001A
STEEL



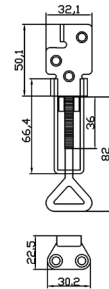
TA-002A
STEEL



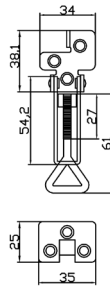
TA-003A
STEEL



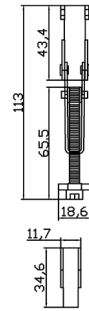
TB-001A
SS304



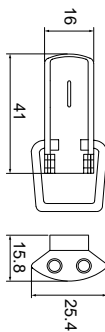
TB-002A
SS304



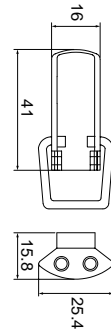
TB-003A
SS304



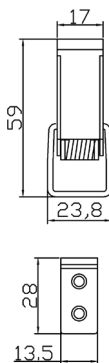
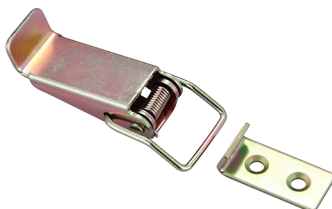
TB-004A
STEEL / SS304



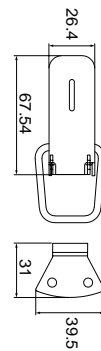
TB-004B
STEEL / SS304



TB-005A
STEEL



TB-006AA
STEEL / SS304



LATCH

扣件

BUCKLE

EXTENSION

BELT RETRACTOR

AUTO PART

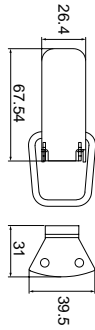
HOOK PART

LOCK STRIKER

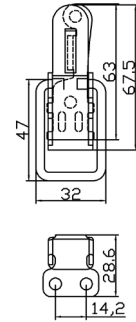
LATCH

HINGE

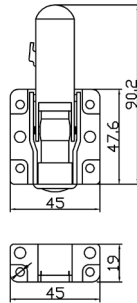
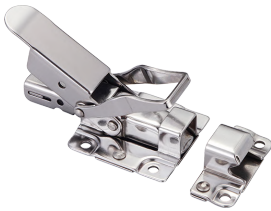
TB-006BA
STEEL / SS304



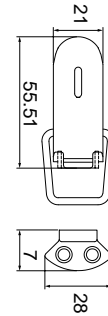
TB-010AA
STEEL



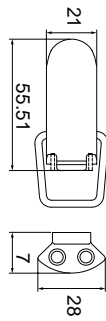
TB-011AB
STEEL / SS304



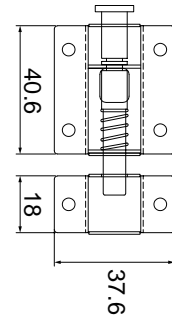
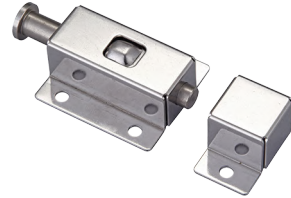
TB-015A
STEEL / SS304



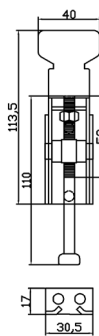
TB-015B
STEEL / SS304



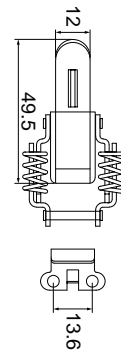
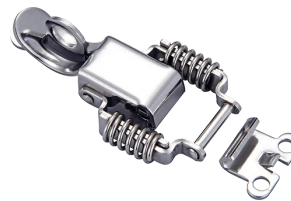
TB-025A
SS304



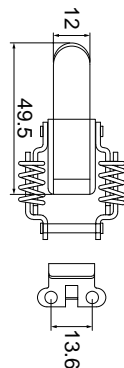
TB-026A
SS304



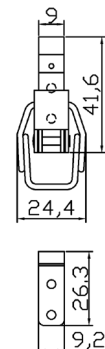
TB-027A
SS304



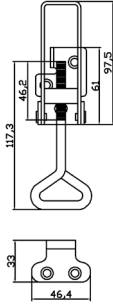
TB-027B
SS304



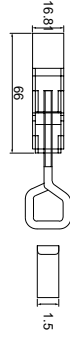
TB-030A
SS304



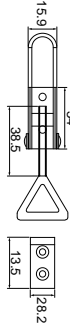
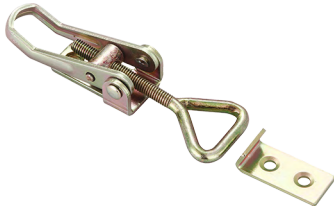
TB-031A
SS304



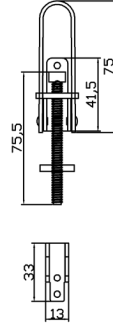
TB-032A
SS304



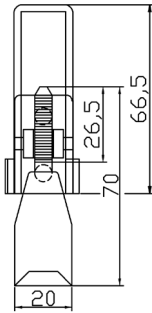
TB-033A
STEEL



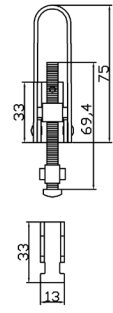
TB-034AA
SS304



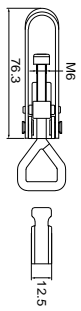
TB-035A
SS304



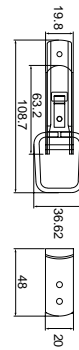
TB-036A
SS304



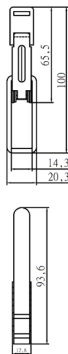
TB-037A
SS304



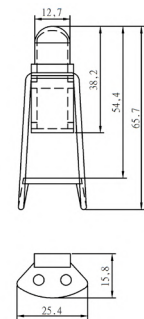
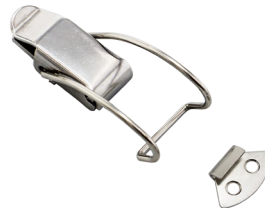
TB-039A
SS304



TB-043A
SS304



TB-044A
SS304



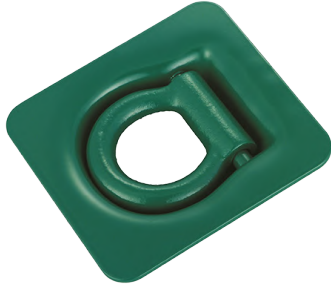
HINGE

鉸鏈

BUCKLE

YD-001

96×102×6.2mm
STEEL



YE-010L/R

117×187×8mm
STEEL



EXTENSION

BELT RETRACTOR

YE-020L/R

75×164×6mm
STEEL



YE-021L/R

75.5×210×6mm
STEEL



AUTO PART

HOOK PART

YE-030L/R

67×24×4.2mm
STEEL



YE-031L/R

63×288×6.2mm
STEEL

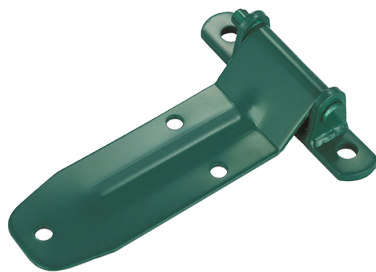


LOCK STRIKER

LATCH

YE-032L/R

59.5×188×3.5mm
STEEL



YE-040L/R

74×209×9mm
STEEL



HINGE

NOTE



2026

HOMER

HARDWARE INC.



+886-4-727-3349



+886-4-724-6499



888@homer888.com.tw



www.homer888.com



NO 248, BAOBU RD.,

CHANGHUA CITY 50049 TAIWAN, R.O.C.

500 彰化市寶廊路248號